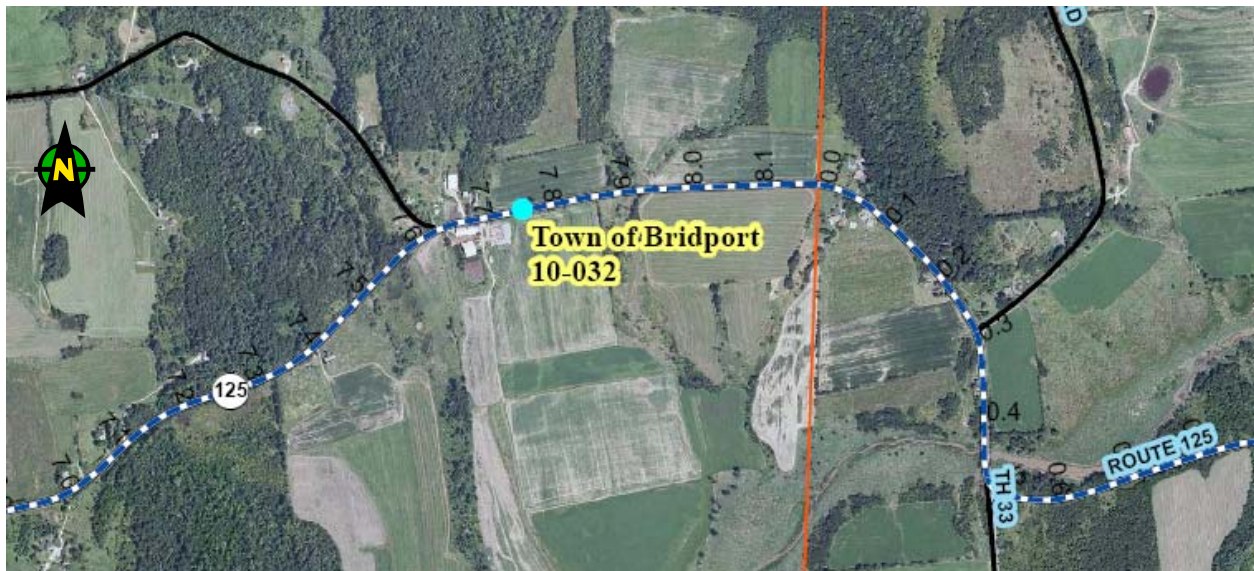


**Traffic Safety Section**  
Highway Safety Improvement Program  
Location Review

Town: Bridport HSIP No.: 10-032  
Route: VT 125 Mile point: 7.462 – 7.762  
Reviewed By: Mario Dupigny –Giroux Date Reviewed: \_\_\_\_\_  
\_\_\_\_\_  
\_\_\_\_\_

**Location Map:**



**Observations:**

Traveling east to west, there is guardrail in the lower part of this segment on both sides of the road. Guardrail on the right side starts at about mile point 7.42 while it starts at about mile point 7.42 on the left side. The guardrail ends at about mile point 7.596 on either side of the roads.

Traveling eastbound, there is a right hand curve that starts at about mile point 7.60 and ends at mile point 7.68.

At mile point 7.64, VT 125 intersects with Market St. The other end of Market St connects to VT 22a.

There are farm buildings and drives just east of the Market St intersection between mile points 7.65 and 7.710.

# **Traffic Safety Section**

## Highway Safety Improvement Program

### Location Review

In the eastbound direction, there is a 30" x 30" curve sign with a side road (W1-10) accompanied with a 40 mph advisory plaque at mile point 7.47 (Signview). This assembly is located 897 ft prior to the intersection and 686 ft before the beginning of the curve. In the westbound direction, there is a similar assembly at mile point 7.85 (Signview). This assembly is located 1108 ft prior to the intersection and 897 ft before the beginning of the curve in the westbound direction.

There were four crashes along this segment between 2007 and 2009. The main crash pattern is a vehicle running off the road (3 out of 4 crashes with the 4<sup>th</sup> crash involving a bicyclist). These single vehicle crashes took place at mile point 7.74 (1 crash) and around mile points 7.52-7.55 (2 crashes).

One of the crashes near 7.52-7.55 took place during the day on a slushy road in the eastbound direction before the curve. The other crash at this location was due to a DUI and took place at night. This crash was in the westbound direction just after coming out of the curve.

At mile point 7.74, the wheel of the vehicle catching the edge of the road was claimed as a reason for the nighttime crash.

#### **Past Projects:**

Project STP 9471(1)S, pin 92C223, a paving project was completed in August 2006.

#### **Past Work Orders:**

The WB school bus stop ahead sign at mile point 7.55 was installed in 1991.

From the June 22, 1978 log, there were W1-10 type signs (W1-2M) at mile points 7.57 and 7.79 with 35 mph advisory plaques. These signs were 36" x 36".

Signview lists the W1-2M signs has being replaced in August 1996 and their locations to be 7.47 and 7.85.

Work order 98-393, which was completed on 10/27/98, had new 40 mph advisory plaques installed.

#### **Future Projects:**

None (not aware of any).

#### **Recommendations:**

# **Traffic Safety Section**

## **Highway Safety Improvement Program**

### **Location Review**

Field Work: Ball bank the curve.

Upgrade the W1-10 to the 2009 MUTCD (i.e., upsize to 36" x 36"). Eastbound, relocate 250 ft at mile point 7.55 (if keep advisory plaque) or 350 ft at mile point 7.53 (if add name plaque. 250 ft + 100 ft for text legend smaller than 6 inches. Sign will be legible at these locations for the 180 ft distance required). Westbound, relocate 250 ft at mile point 7.72 (if keep advisory plaque) or 350 ft at mile point 7.75 (if add name plaque).

Depending on the outcome of the ball banking (if chevrons are not mandatory), possibly add 6" x 8" delineators (back-to-back) north side of road from about mile point 7.60 to 7.68. Space delineators at 70 ft apart (for 40 mph).

# COLLISION DIAGRAM

Key Number =

MUNICIPALITY: <u>Bridport</u> COUNTY: _____	FILE: <u>100320102</u>
INTERSECTION: <u>VT-125</u>	CASE #: _____
PERIOD: <u>3</u> YEARS <u>0</u> MONTHS FROM <u>1/1/2007</u> TO <u>12/31/2009</u>	BY: _____ DATE: <u>2/3/2011</u>



SYMBOLS		MANNER OF COLLISION	
MOVING VEHICLE	PEDESTRIAN	REAR END	HEAD ON
TURNING VEHICLE	BICYCLIST	LEFT TURN	RIGHT TURN
BACKING VEHICLE	ANIMAL	LEFT TURN	RIGHT TURN
PARKED VEHICLE	FIXED OBJECT	OVERTAKE	RIGHT ANGLE
RECORD NUMBER	Fatal	OUT OF CONTROL	SIDE SWIPE

Crash Number	Road	Marker	Date	Time	Weather	Injuries	Fatalities	Type	Description
1	VT-125	7.52	3/9/2009	10:06	Snow	0	0	Single Vehicle Crash	Approximately one eighth of a mile west of Market Road. <b>Weather</b> conditions included <b>snow</b> . <b>Road conditions</b> included <b>snow</b> and <b>slush</b> . Op#1 was advised me that she was traveling east on VT Route 125 at approximately 45 mph. Advised that while traveling east she hear a loud "whoosh" sound from beneath her car and she <b>started to slide</b> . Advised that she slid off the left side of the road. While traveling east, operator lost control of vehicle#1, traveled across the double yellow centerlines, across the westbound lane and off the north side of the roadway. After leaving the north side of the roadway, vehicle#1 collided with an embankment. There were no skid or scuff marks noted. <b>F 31, Inj 5</b>
2	VT-125	7.55	7/31/2007	22:30	Clear	1	0	Single Vehicle Crash	The road contains a corner and is on a hill. There is guardrail on both sides of the road. <b>Weather was clear and road was dry</b> . 1 was coming from Mr. Ups in Middlebury. Said started swerving and he hit the guardrail. Slid sideways and across the centerline. Slid for 152 ft southeasterly when hit GR. Went back across both lanes and hit GR. <b>M 25 Inj 2 BAC 0.103 DUI</b> .
3	VT-125	7.68	9/5/2009	14:51	Clear	1	0	No Turns, Thru moves only, Broadside	The weather was <b>partly cloudy</b> and the <b>roadways were dry</b> . Op#1 advised that she was traveling east on VT 125 <b>approaching the farm and the bicyclist came out of a driveway</b> to her left without stopping and ran into the side her truck. Veh 1 was traveling east on VT 125 near Market Rd. in the town of Bridport. A bicyclist that worked at the nearby farm came out of a driveway to the north side and entered into the roadway and struck the side of the truck. The bicyclist didn't stop before entering the roadway. The bicyclist was a farm worker at the nearby farm. <b>Veh 1, F 24 Inj 5. Bicyclist, M 21, Inj 2.</b>
4	VT-125	7.74	2/17/2007	23:00	Clear	0	0	Single Vehicle Crash	<b>Weather was clear. Road was clear.</b> Pole CVPS #46. 1 was west, lost control. Travelled off north side of the road, came in contact with pole # 46. Op1 left scene but told witness1 that he lost control of his truck because he <b>caught the edge of the road. M 66, Inj 5.</b>